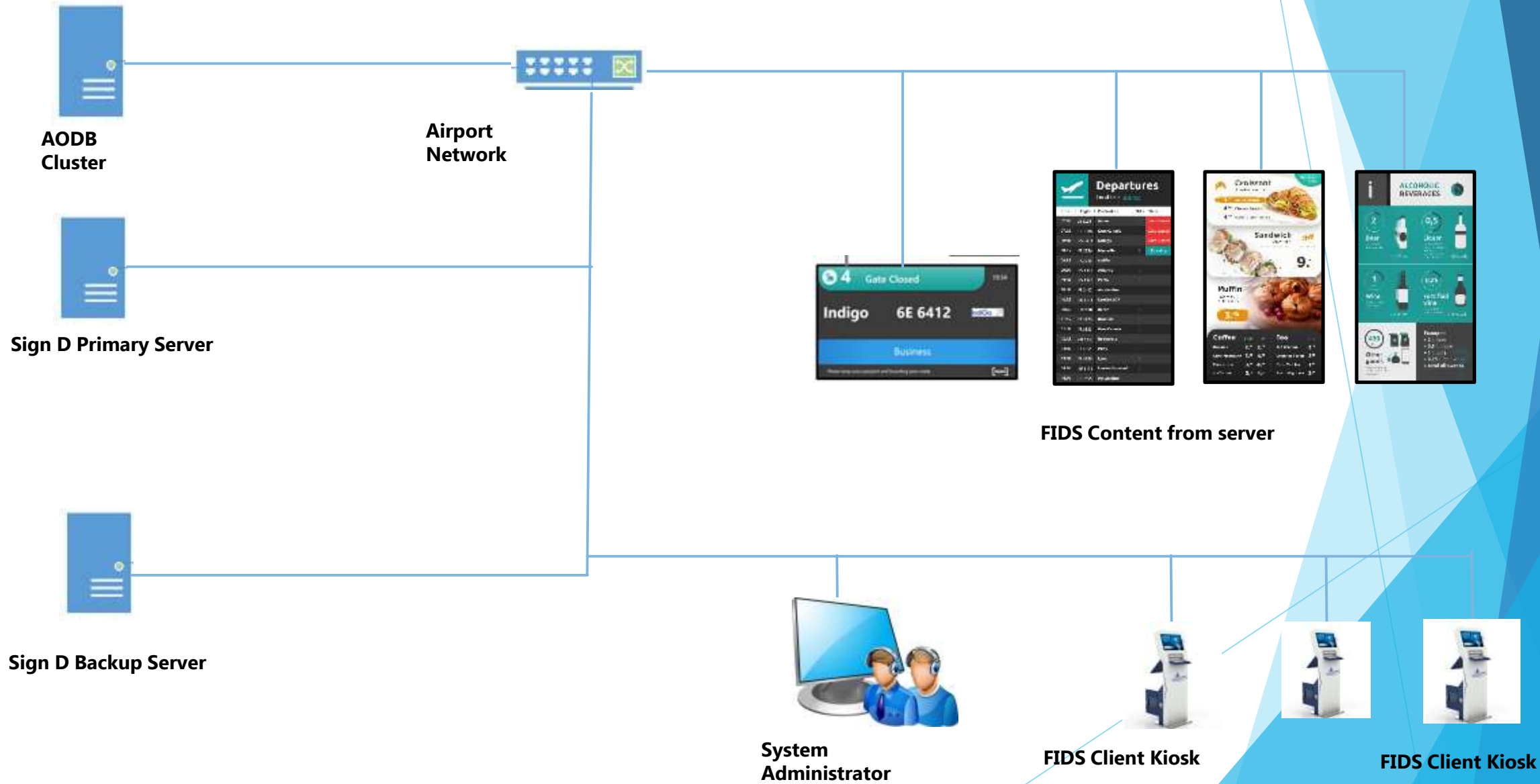


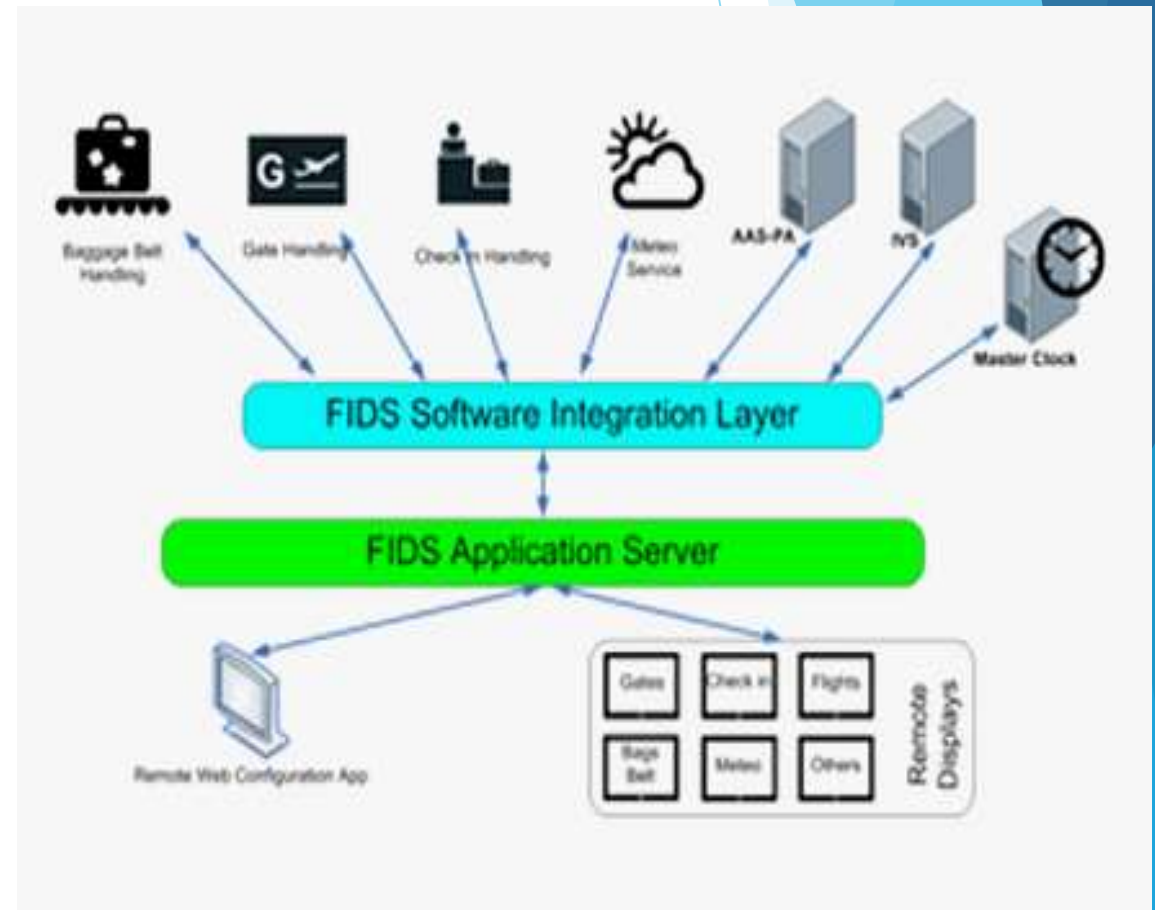
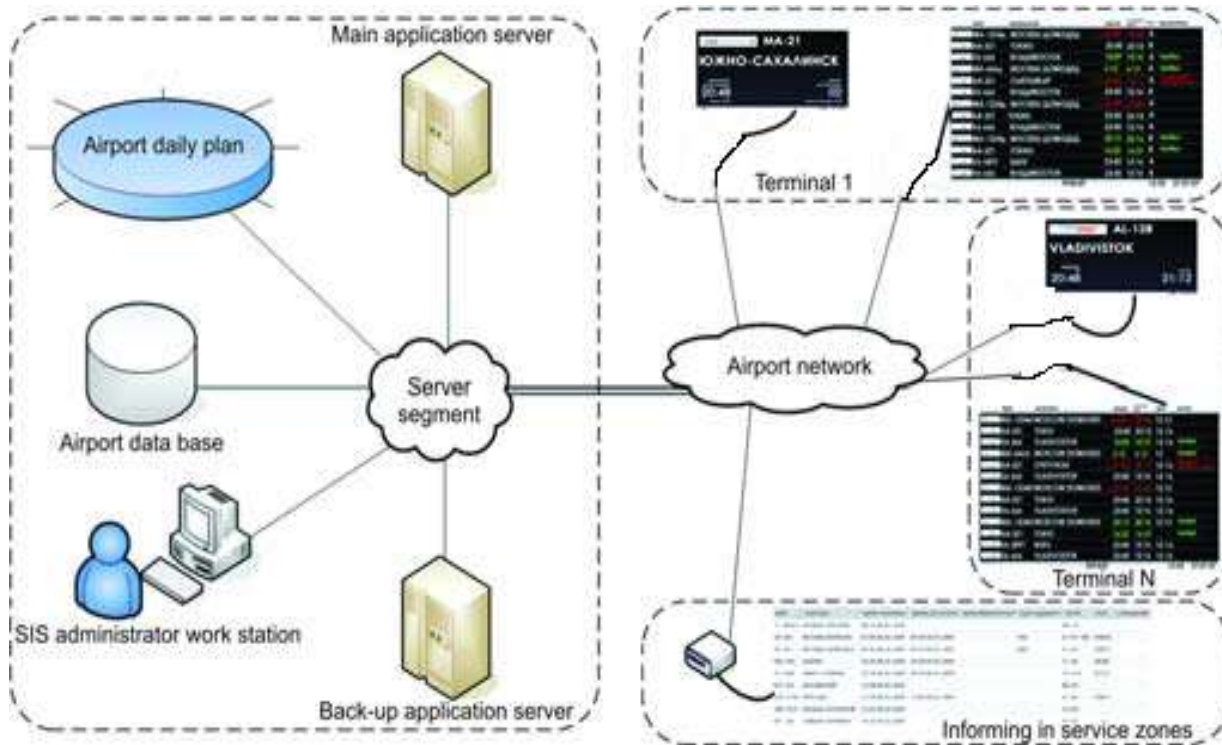


# FIDS Applicable Software developed by Genius Presentation Pvt. Ltd.

# Sign D Enterprise Base Architecture



# Airport FIDS Architecture - SIGN D



# Sign D Software Feature:

- The SIGN D Primary Server and Backup server are hosted at PATNA International Airport Limited environment.
- In case of Primary server failure, the media players and SOC devices will automatically connect from Primary Server to Backup Server.
- The SIGN D Enterprise Primary (Main) Server is a central database, Backup server is a live copy of the SIGN D Enterprise Primary server and acts as a failover mechanism in case of system or network failure that would affect the SIGN D Enterprise Primary (Main) server.
- All content and database information is synchronized between the SIGN D Enterprise Primary (Main) Server and the subsequent PADS4 Backup server.
- The SIGN D Enterprise Viewers receive the content and data from the SIGN D Enterprise Primary Server and fall back to Backup Server in case of system or network failure that would affect the SIGN D Enterprise Primary Server.

- Each Viewer will have a local copy of data that will be refreshed at a predefined interval.
- If there is a network failure, the Viewers will have the capability to continue content playback until the failure is resolved.
- The user applications are connected to SIGN D Enterprise Primary (Main) server.
- SIGN D Enterprise FIDS Application software can take data from AODB/CUTE/BHS/DCS, etc.
- FIDS Application software (SIGN D) is able to put data manually to the display by any excel/XML/HTML or csv file.
- SIGN D works on industry standards RDMS like, My SQL, Oracle, MySQL etc.
- RDBMS maintains the Master Flights Table on defined period
- All traffic type flag is available
- It has display configuration tools which helps to design templates as per requirement which can make displays groups as per airports area like arrival/departure/security hall/domestic/international.

- It has Indian Language Dictionary to create and maintain for all flight information related information.
- Baggage claim software module describes about the status of flight and belt number on airport on the display installed on the belt.
- Boarding gate display allow user to see boarding gate display information such as flight no, destination, depart timing, etc.
- SIGN D Page design tools allows user to freely design the FIDS page like font color, font size, page resolution, image size and resolution, airlines logo size increase/decrease and to place any specification line/information any where on the displayed page and it has authenticity to publish the newly designed page over the display.
- It has security feature which can give access to any specific person/administrator to use the interface and console of FIDS Application software.
- Its display monitoring feature allow user to see actual display status in the LAN network.

- SIGN D Enterprises has all the features related to FIDS Display requirement.
- It can run the FIDS data in any area of the airport like, Arrival, Departure, Security Hold, Baggage Claim Area, Check In Counter , etc.

Developed By: Genius Presentation Pvt. Ltd. All rights reserved.

Address: 1014-1015, 10<sup>th</sup> Floor, Hemkunt Chamber, Nehru Place, New Delhi - 110019

[www.geniuspresentation.in](http://www.geniuspresentation.in) Email: [info@geniuspresentation.com](mailto:info@geniuspresentation.com) , Toll Free: 18003092945